

From: Roger Gough, Cabinet Member for Education and Health Reform

Meradin Peachey, Kent Director of Public Health

To: Kent Health and Wellbeing Board

Subject: Kent Framework for System Assurance

Classification: Unrestricted

Summary:

The Kent Health and Wellbeing Board (KHWB) wishes to develop an assurance framework across the Health and Social care system. It is proposed that indicators from the three national outcomes frameworks, the Kent Health and Wellbeing strategy and KCC Key Performance Indicators are taken as the basis to develop an overview of the health and social care system across Kent. These indicators will form a relatively simple Assurance Dashboard for the KHWB to assess current service effectiveness. In addition it may be useful to identify one or two other indicators within the system that can alert the Board to potentially unsustainable pressures in the component sectors. The Dashboard will also provide assurance on a regular basis if overall status of the indicators is progressing in the right direction.

Recommendation(s):

- i) Note the contents of this paper and approve this proposal for developing Kent wide assurance framework.*
- ii) Make recommendations for alternative indicators including those for potential areas of stress within the system that may be unsustainable without concerted action to address the issues highlighted.*
- iii) Approve the development and ownership of the dash board for regular monitoring of the agreed indicators.*

1. Introduction

At its inaugural meeting in April 2013 the Kent Health and Wellbeing Board (KHWB) received information on how constituent parts of the health and social care system in Kent are performing against national requirements. The KHWB requested this information be available as a standing agenda item and be extended to include primary and community services, acute hospital services, public health and social care.

Currently across the health and social care services a large amount of information is collected and it is important that the KHWB receives the most relevant and appropriate data selected from the myriad available in order to inform its business.

It is also important to ensure that the assurance reports to the KHWB contain data that is already available rather than generating new information and data collection requirements. To be meaningful the data must also be reportable in time-frames relevant to the sitting of the Board rather than annual updating that is required for a number of indicators.

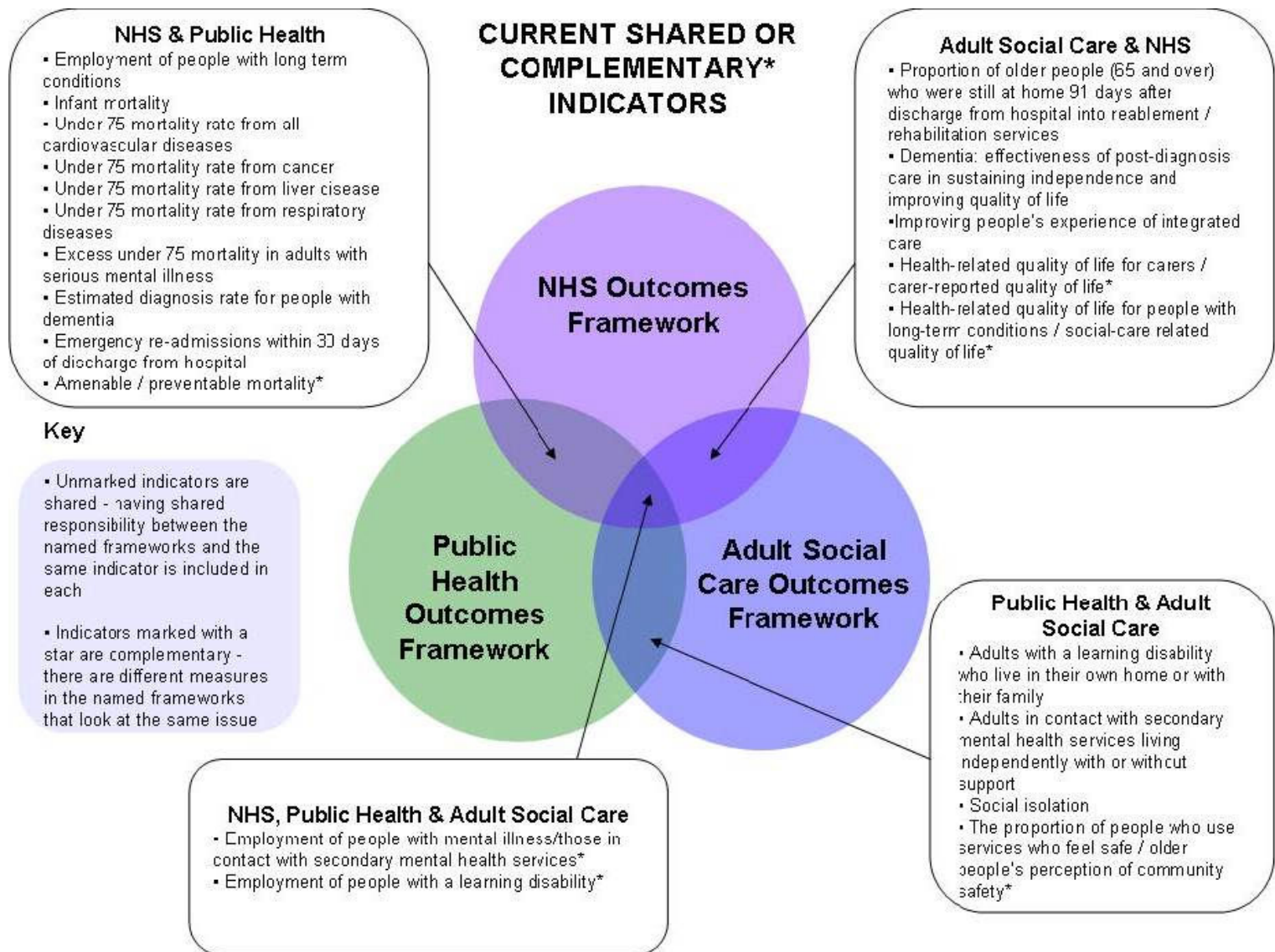
As well as demonstrating how the health and social care system is operating across the County the data supplied should inform the key responsibilities of the Board concerning the promotion of integration and the five outcomes contained in the Health and Wellbeing Strategy. It would also be useful to include indicators that demonstrate potential stress within constituent parts of the system that may require concerted action to alleviate and ensure service sustainability.

2. *Current indicators*

Nationally the performance of health and social care is assessed through the three Outcomes Frameworks that apply to the NHS, Public Health and Adult Social Care respectively. (Currently there is no corresponding framework specifically applicable to children although some indicators in other frameworks are relevant).

Each of these frameworks operate separately for each part of the system but they share indicators and domains designed to make them complementary to promote cross sector working and partnership towards joint outcomes. There are therefore shared indicators between each and all three of the sectors. The indicators are not intended to form a performance management framework but have been chosen to be indicative of whether key overarching outcomes are likely to be achieved. Some indicators in the Operating Frameworks have yet to be defined and others are collected on an annual basis only and are therefore less useful to the KHWB.

Figure 1



Other indicator sets that can inform the Health and Wellbeing Board include the KCC Key Performance Indicators (KPI's) that are reported on a quarterly basis.

3. Kent wide Assurance Framework

The role of the Kent Health and Wellbeing Board is to provide a system overview and to:

- assess the needs of their local population through the joint strategic needs assessment process
- produce a local health and wellbeing strategy as the overarching framework within which commissioning plans are developed for health services, social care, public health and other services which the board agrees are relevant
- promote greater integration and partnership, including joint commissioning, integrated provision, and pooled budgets where appropriate.

To assist the delivery of these functions the members of the Kent Health and Wellbeing Board wish to develop an assurance framework. It is proposed that the Board regularly receives quarterly or 6 monthly reports on a suite of indicators or dashboard as attached at Appendix 1.

The dashboard of indicators that is proposed is designed to incorporate a number those that are shared variously between the national outcomes frameworks, the Kent Health and Wellbeing Strategy and KCC KPI's. Others are included for their particular relevance to the population groups or system sectors concerned.

Some of these overarching indicators such as Under 75 mortality rates for cardiovascular disease, respiratory disease and cancer are only reported on an annual basis. However, applying the analysis and methodology developed by Professor Chris Bentley compliments the report on *Addressing Health Inequalities in Kent*, also before the board today, which highlights small geographical areas (Lower Super Output Areas) with the top 20% premature mortality due to cardiovascular, cancer and respiratory diseases. The high level indicators mentioned in the assurance framework related to premature mortality will have a sub set of detailed indicators which can be monitored on quarterly basis. For instance the indicator on under 75 mortality for all cardiovascular diseases will have a sub indicator of associated risk factors such as that of under-diagnosis of hypertension and smoking cessation in these areas. Similarly the indicator on Cancer can have a subset on uptake of cancer screening services and respiratory can have an indicator on under-diagnosis of Chronic Obstructive Pulmonary Diseases (COPD) and smoking cessation. By monitoring these sub indicators the local health and wellbeing Board will be able to track progress of the named high level indicators.

4. Conclusions

Indicators across the three national outcomes frameworks, the Kent Health and Wellbeing Strategy and KCC KPIs can provide an overview of the status of the health and social care system.

Jointly held indicators can form the basis for a relatively simple Assurance Dashboard that will inform the KHWB of current service effectiveness. In addition it may be useful to identify one or two other indicators for each part of the system that reveal whether the current service levels are sustainable in the longer term. The Dashboard should also demonstrate whether indicators are improving or deteriorating.

Use of the dashboard should enable the KHWB to:

- Have timely indication of areas of concern and improvement across the system with emphasis on those aspects that involve joint responsibility
- Identify potential areas of stress within the system that may be unsustainable without concerted action to address the issues highlighted.

Please see Appendix 1 for a sample dashboard

5. Recommendation(s)

The Health and Wellbeing Board is asked to:

- Note the contents of this paper and approve this proposal for developing Kent wide assurance framework.*
- Make recommendations for alternative indicators including those for potential areas of stress within the system that may be unsustainable without concerted action to address the issues highlighted.*
- Approve the development and ownership of the dash board for regular monitoring of the agreed indicators.*

6. Contact details

Report Author

Malti Varshney, Consultant in Public Health, email: Malti.varshney@kent.gov.uk

Mark Lemon, Strategic Business Advisor, email: Mark.Lemon@kent.gov.uk

Helen Groombridge, Performance Officer, email: Helen.Groombridge@kent.gov.uk

Director Lead:

Meradin Peachey, Director of Public Health, email Meradin.Peachey@kent.gov.uk

Appendix 1

Kent Health and Wellbeing Strategy Outcomes

Outcome 1	Every child has the best start in life
Outcome 2	Effective prevention of ill health by people taking greater responsibility for their health and wellbeing
Outcome 3	The quality of life for people with long term conditions is enhanced and they have access to good quality care and support
Outcome 4	People with mental health issues are supported to “live well”
Outcome 5	People with dementia are assessed and treated earlier

Indicator	Shared Outcomes Framework (OF), Health and Wellbeing Strategy Outcomes, KCC Key Performance Indicators
U75 mortality rate from cancer (see explanation in section 3)	NHS and Public Health OFs H&WBS Outcome 2
U75 mortality rate from respiratory diseases (see explanation in section 3)	NHS and Public Health OFs H&WBS Outcome 2
U75 mortality rate from all cardiovascular disease (see explanation in section 3)	NHS and Public Health OFs
Employment of people with long-term conditions	NHS & Public Health OFs H&WBS Outcome 3
Estimated diagnosis rate for people with dementia	NHS and Public Health OFs H&WBS Outcome 5
Proportion of older people (65+) who were still at home 91 days after discharge from hospital into reablement/rehabilitation services	Adult Social Care and NHS OFs H&WBS Outcome 3

Dementia: effectiveness of post-diagnosis care in sustaining independence and improving quality of life	Adult Social Care and NHS OFs HAWBS Outcome 5
Adults with a learning disability who live in their own home or with their family	Public Health and Adult Social Care OFs
Reducing the number of people reporting that they feel socially isolated	Public Health and Adult Social Care OFs H&WBS Outcome 4
Employment of people with mental illness/those in contact with secondary mental health services	NHS, Public Health and Adult Social Care OFs H&WBS Outcome 4
Increase breastfeeding initiation rates at 6-8 weeks	Public Health OF H&WBS Outcome 1
Smoking status at time of delivery	Public Health OF H&WBS Outcome 1
First time entrants to the youth justice system	KCC KPI Public Health OF
Under 18 conceptions	Public Health OF
	System sustainability indicators
Acute sector	
Bed occupancy levels in local hospitals	
Waiting times in A&E departments	
Primary care	
Out of Hours service – 111 performance	
Public Health	
Rates of infectious disease	
Seasonal mortality	Public Health OF

Adult Social Care	
Delayed transfers of care and those attributable to social care	Adult Social Care OF H&WBS Outcome 3
Mental Health	
Reducing the number of suicides	Public Health OF H&WBS Outcome 4
Children	
Percentage of children becoming subject to a child protection plan for a second or subsequent time	KCC KPI
Children in care with 3 or more placements in the last 12 months	KCC KPI